

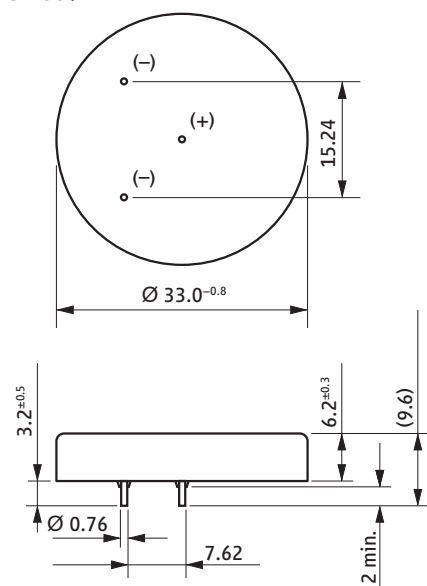
## Performance Data

(Typical values for batteries stored at +25 °C for one year)

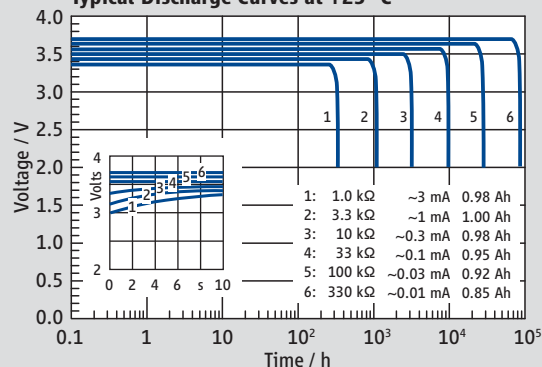
|                                   |                          |
|-----------------------------------|--------------------------|
| System                            | Lithium Thionyl Chloride |
| Nominal voltage                   | 3.6 V                    |
| Nominal capacity                  | 1 Ah                     |
| Nominal current                   | 0.5 mA                   |
| Max. continuous discharge current | 10 mA                    |
| Pulse current capability          | 20 mA                    |
| Anode surface area                | 7.5 cm <sup>2</sup>      |
| Lithium content                   | 0.3 g                    |
| Weight                            | 16 g                     |
| Volume                            | 5 cm <sup>3</sup>        |
| Temperature range                 | -55 °C ... +85 °C        |



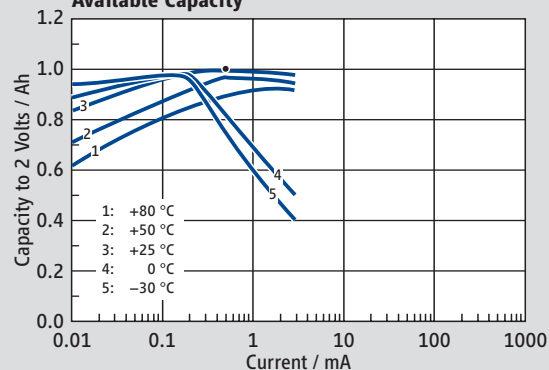
## SL-889



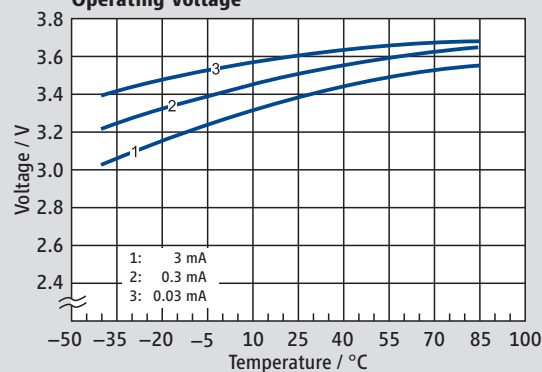
## Typical Discharge Curves at +25 °C



## Available Capacity



## Operating Voltage



**WARNING:**  
Fire, explosion, and severe burn hazard. Do not recharge, disassemble, heat above 100 °C, incinerate, or expose contents to water.

## Available Terminations

SL-889/P Pins

## Catalogue No.

11 1 18894 00